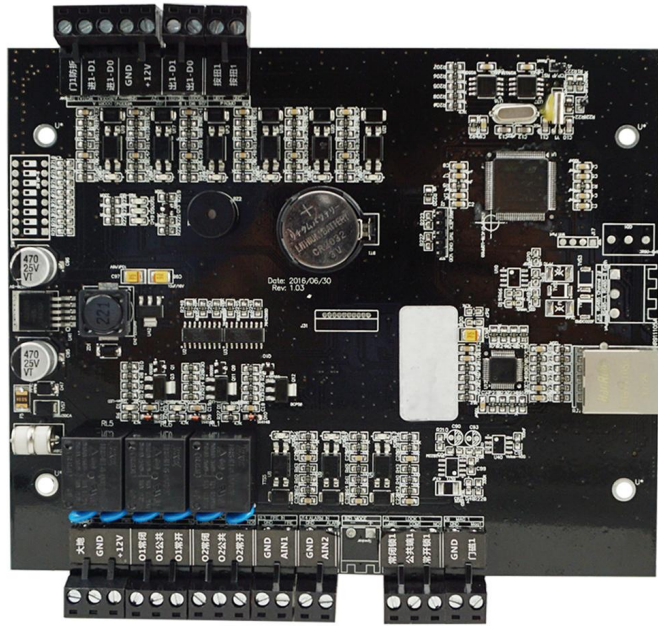




<b>Forma de comunicação:</b>	TCP / IP / Rs485 opcional
<b>Programas:</b>	Software grátis para PC
<b>Tamanho:</b>	170 * 155 * 17 mm
<b>Adequado para:</b>	<b>Sistema de controle de acesso / Sistema de alarme contra roubo / sistema de alarme contra incêndio</b>
<b>Material:</b>	Placa PCB
<b>Cor:</b>	Preto
<b>Peso:</b>	0,7 kg
<b>Acessórios opcionais:</b>	Fonte de alimentação de caixa de metal
<b>Garantia:</b>	2 anos de garantia
<b>OEM:</b>	Bem-vindo OEM

## O QUE CARACTERÍSTICAS EA-811 TEM?

# Compatible accessories introduction



Card reader× 2



Lock×1



Button× 1



Door sensor×1



siren ×1



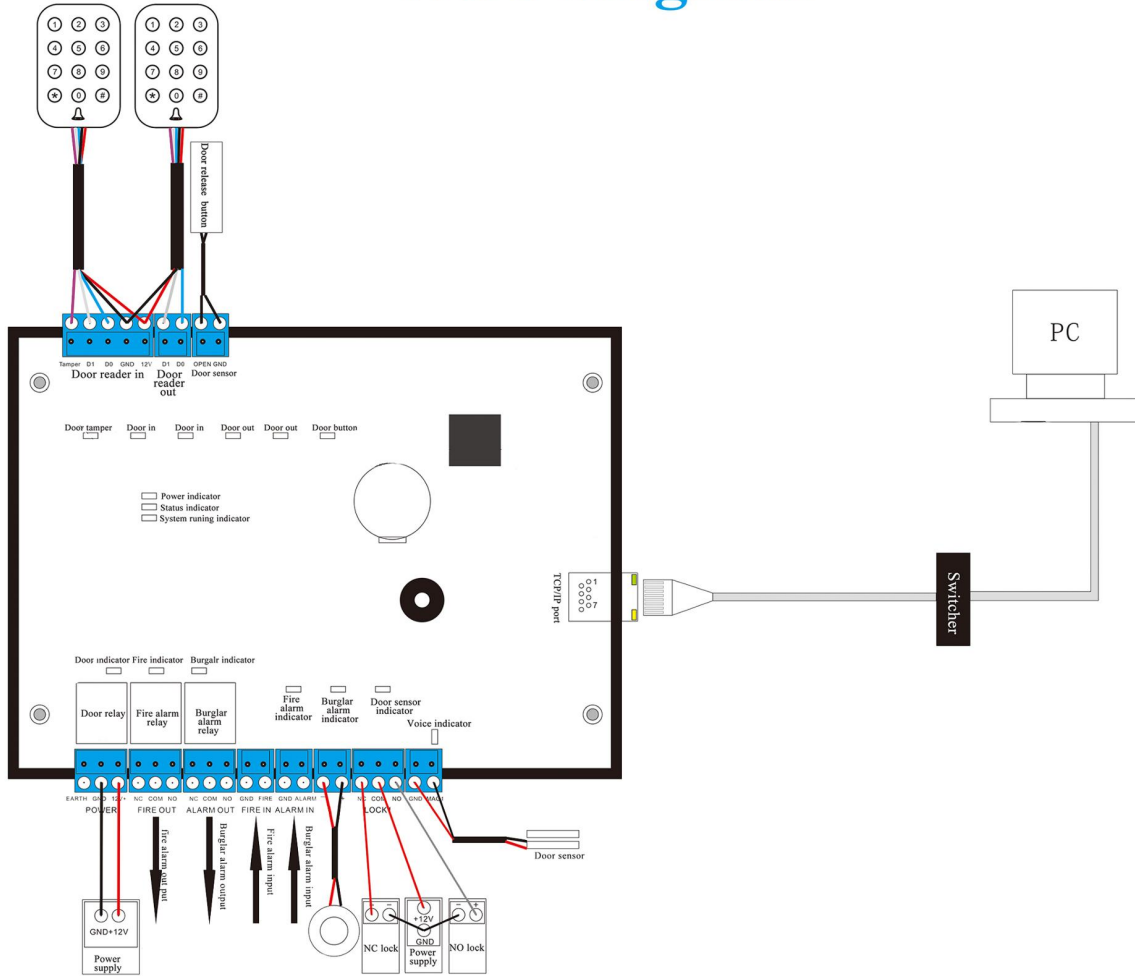
Fire alarm input /output



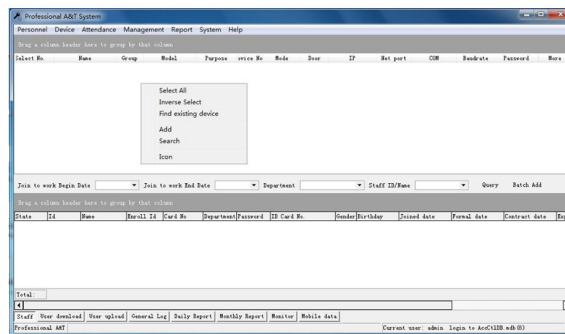
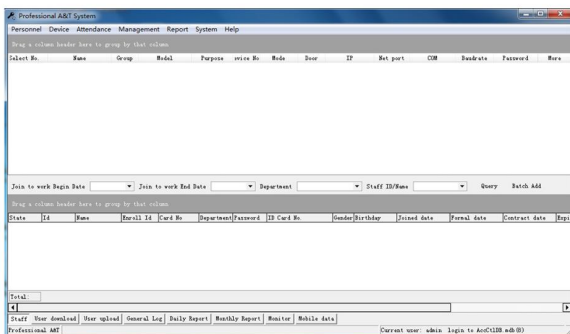
Burglar alarm input/ouput



# Wire diagram



# PC software

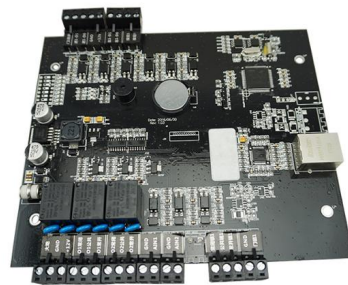


# Optional accessories



**Metal box power supply**

# Standard package



**Single package size: 248\*165\*30mm**

**The number of full boxes: 46**

**FCL weight: 15kg**

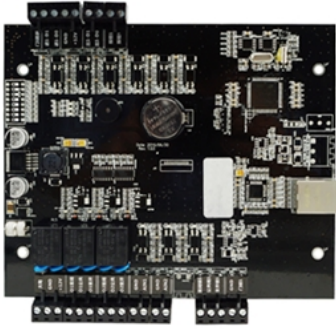
**FCL size: 470\*383\*420mm**

## *Welcome OEM*

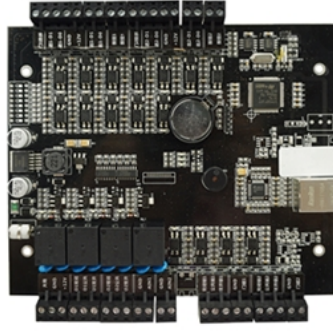
**COMO SOBRE OUTRA ESCOLHA?**



**SMQT**  
铭汗科技



**SMQT**  
铭汗科技



**SMQT**  
铭汗科技

