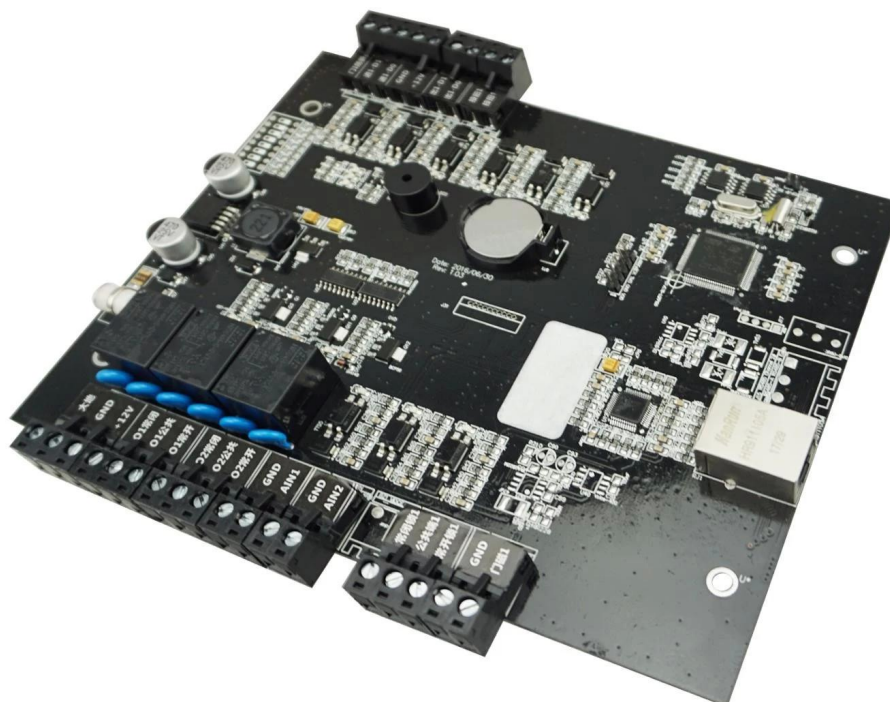
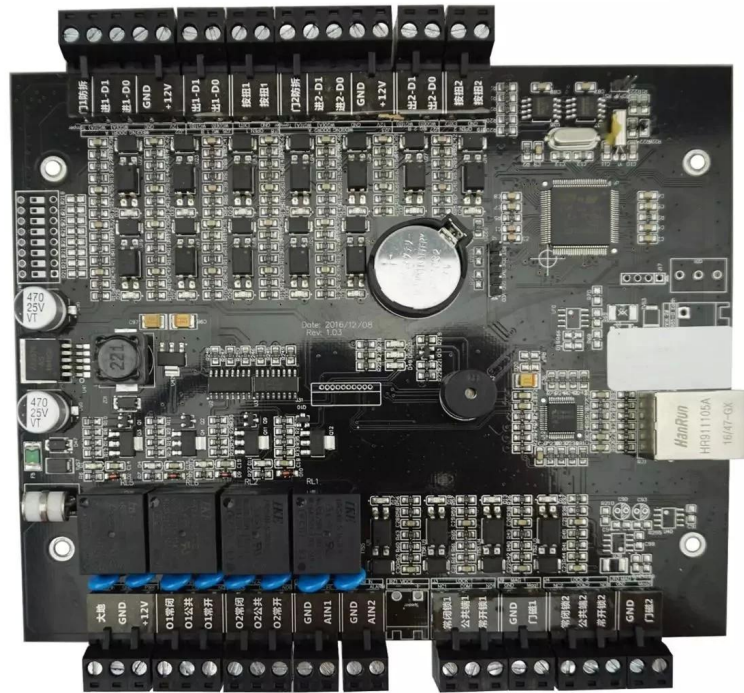


Single door access controller



Nome do Produto	Controlador de acesso de porta única TCP / IP com duas direções
Fonte de energia:	DC 9V ~ 14V
Corrente de trabalho	& lt; 350mA
Pode gerenciar 1 porta de entrada e saída	
Capacidade de 20000 usuários, 100.000 registros de eventos	
Comunicação TCP / IP (opção R485)	

Compatible accessories introduction



Card reader× 4



Lock×2



Button× 2



Door sensor×2



siren ×1



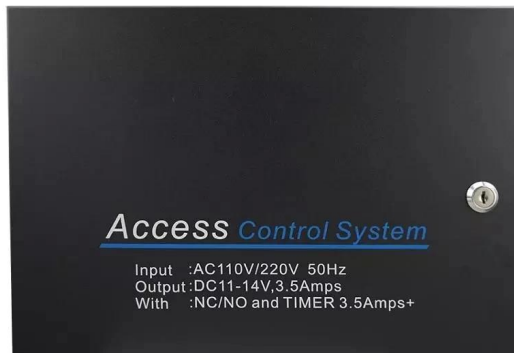
Fire alarm input/output



Burglar alarm input/ouput

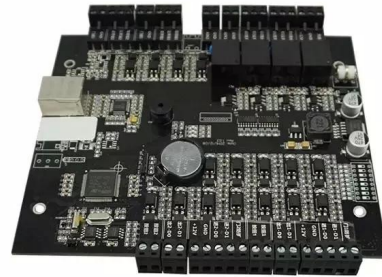


Optional accessories



Metal box power supply

Standard package



Single package size: 248*165*30mm

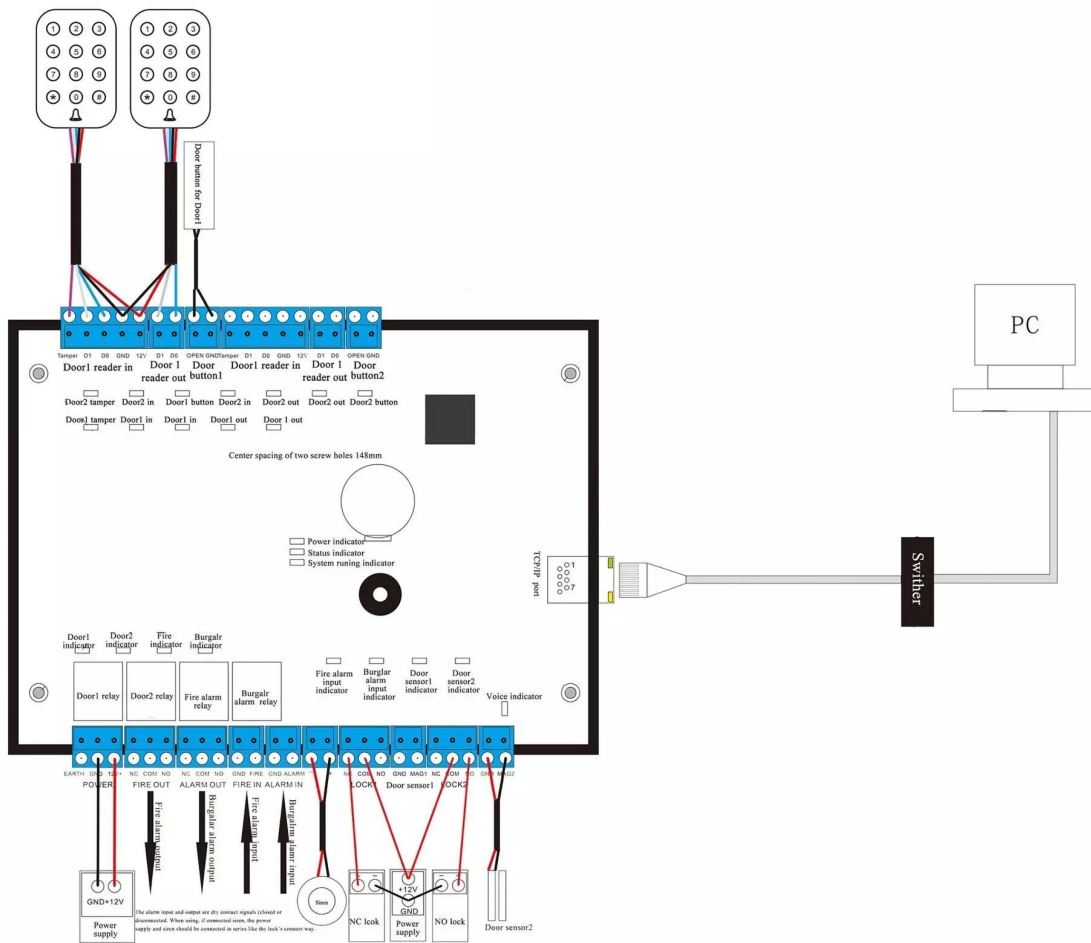
The number of full boxes: 46

FCL weight: 15kg

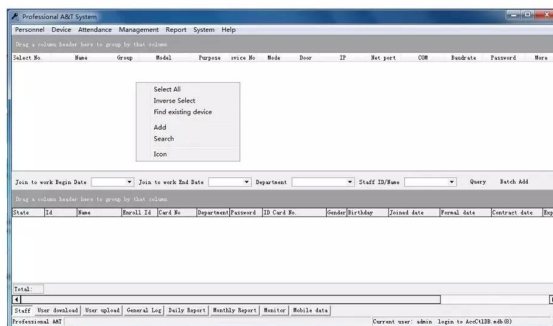
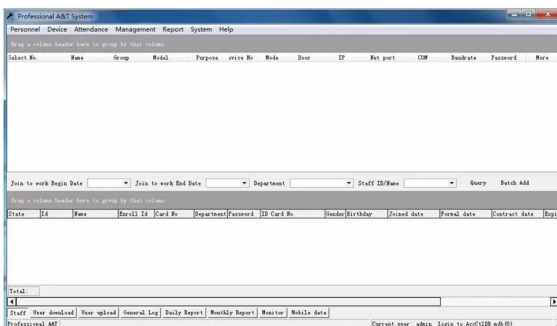
FCL size: 470*383*420mm

Welcome OEM

Wire diagram



PC software



RELACIONADO PRODUTOS:

