

**Leitor de cartão de controle de acesso de porta de cartão de identificação
à prova d'água EA-92**

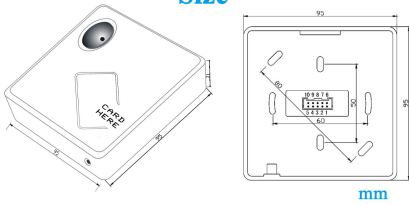


**Waterproof
ID 125Khz frequency
Accept logo print**

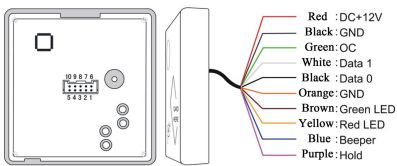


Model NO.	EA-92
Power supply	DC 9-15V
Power consumption	<1W
Card type	125 KHz
Read range	5-10 cm
Cable distance	150m
Output Format	WG26/WG34(Optional)
Keypad output	4bits/8bits(Optional)
LED Tips	Flash card / Doorbell
Reading tips	Beeper/LED
Waterproof	Yes
Dimensions	95L×95W×21H(mm)
Weight(g)	160±10
Material	PC+ABS
Environment	-30℃to+65℃

Size

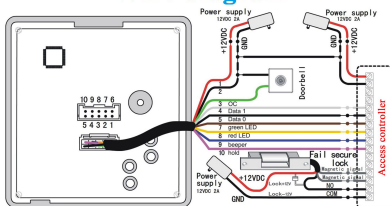


Wire port introduction



NO	Color	Function	Description
1	Red	12V+	DC Power 12V
2	Black	GND	DC Power 0V
3	Green	OC OUT**	OC Out to output doorbell signal or anti-tamper signal
4	White	DATA1	Wiegand DATA1 Output
5	Black	DATA0	Wiegand DATA0 Output
6	Orange	GND	Signal Grounding
7	Brown	Green LED*	Grounding to display 1" message and green LED lights up
8	Yellow	Red LED*	Grounding to display 2" message and red LED lights up
9	Blue	Beeper	Beeper controller, grounding to work
10	Purple	Hold	Card reading controller, grounding to stop therefore reading

Wire diagram



2 years warranty

