

# Wireless door sensor

*Fireproof ABS shell*

*DC 12V power supply*

*Wireless frequency 315Mhz/433Mhz optional*

*Wireless signal transmisson distance max 100m*

**SMQT®**



## • *Parameter*

**SMQT®**

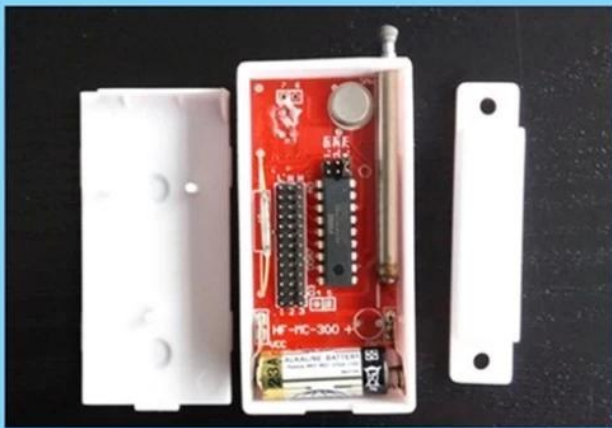
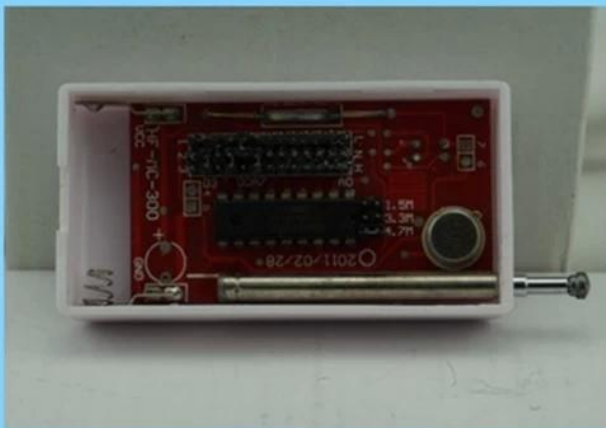
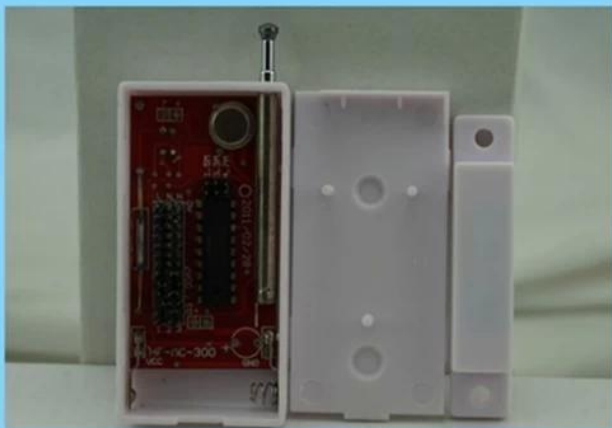
<b>Especificação</b>	
Nome do Produto	Sensor de porta magnética sem fio
Número do modelo	EB-130
Tensão operacional	12V
Distância de funcionamento	40 ± 5 (mm)
Frequência de transmissão	315MHZ / 433MHZ
Distância de transmissão	≤100m

## • *Introduction*

**SMQT®**

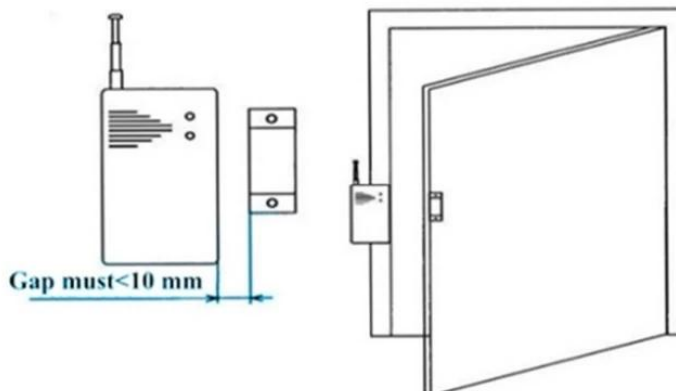
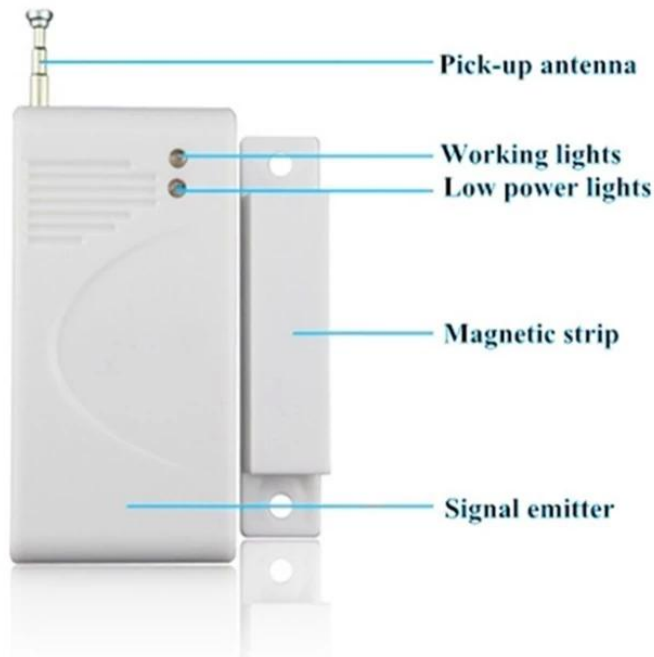
O sensor de contato de porta sem fio é o interruptor de sensor magnético 12v e sensor de alarme de cortina sem fio para sistema de alarme.

# PRODUCT PICTURE





# PRODUCT FEATURE



**Function:** To detect the door, window, drawer, ambry is illegally open or move.

**Features:** Triggered under the armed state, there will be alarm signal to send to alarm host.

**Installation:** installed at the closed door and drawer. (PS: Detectors and magnetic stripe is opposite, the spacing of less than 1 cm)



Installation Instruction

1. Emitter and magnetic stripe with two-side glue stick on the door and door frame, as far as possible between closed without gap
2. Suitable for wood door/window or glass door/window.

## • Office show

SMQT®



## • Exhibition

SMQT®

2011 Brazil Fair



2012 Shenyang Fair



2013 Jinan Fair



2013 Shenzhen Fair



2012 Shenyang Fair



2013 Shenyang Fair



2013 Shenzhen Fair



2015 Shenzhen Fair

.....