

SMQT com fio porta de contato magnético sensor com porta NC / NO / COM



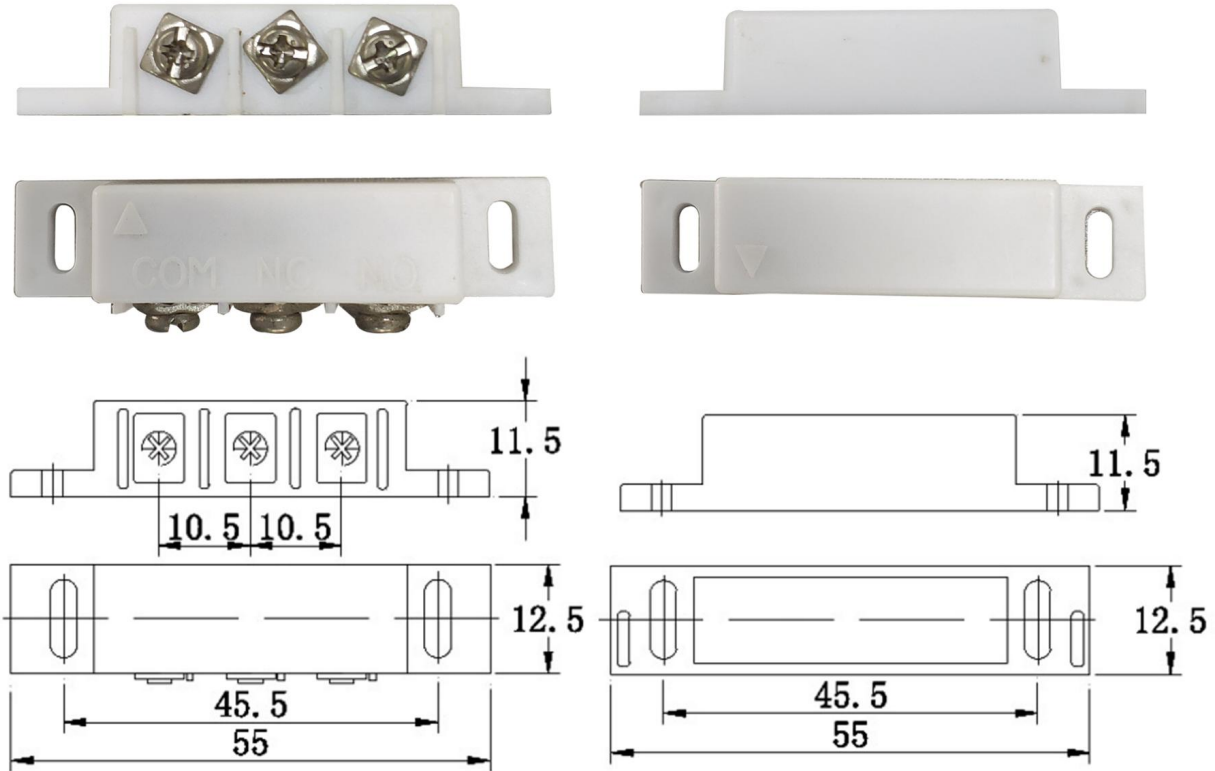
EB-131B'S PRINCIPAL PARÂMETRO

Nome do Produto:	3 contatos sensor de contato magnético com Porta NO / NC / COM
Modelo número:	EB-131B
Trabalhando Voltagem:	Max DC 100
Trabalhando atual:	Máximo 0,5A
Consumo de energia:	10W
Porta de interface:	NO / NC / COM
Lacuna de indução:	20 ~ 30mm
Tamanho:	Parte Reed: 55 * 12,5 * 11,5 (milímetros) Parte do ímã: 55 * 12.5 * 11.5 (milímetros)
Adequado para:	Todos os tipos de controle de acesso da porta sistema e sistema de alarme contra roubo
Material:	Carcaça ABS + placa PCB + Reed interruptor
Cor da carcaça:	Branco / Marrom (opcional)
Peso:	Unidade: 13g 10 pares por saco, por saco de peso 220g

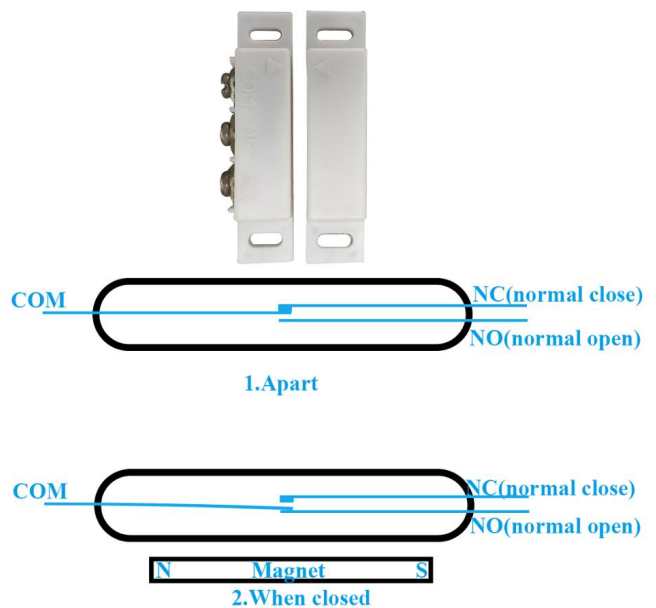
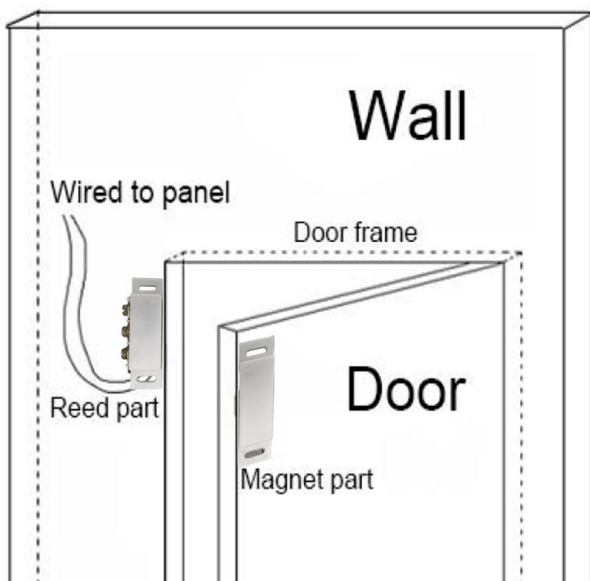
Garantia:	2 anos de garantia
OEM:	Bem-vindo OEM

Quais os recursos do EB-131B?

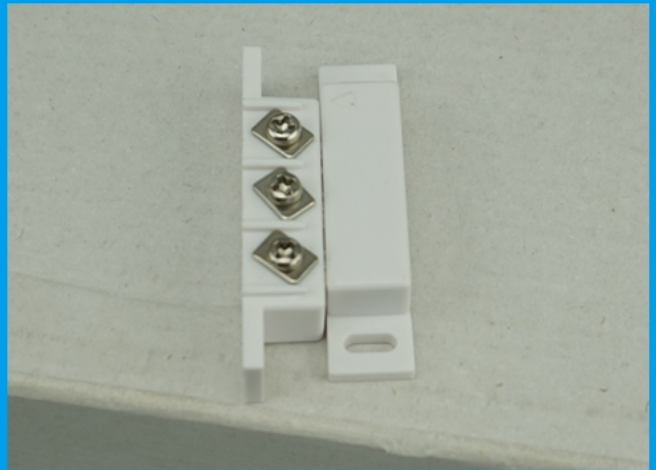
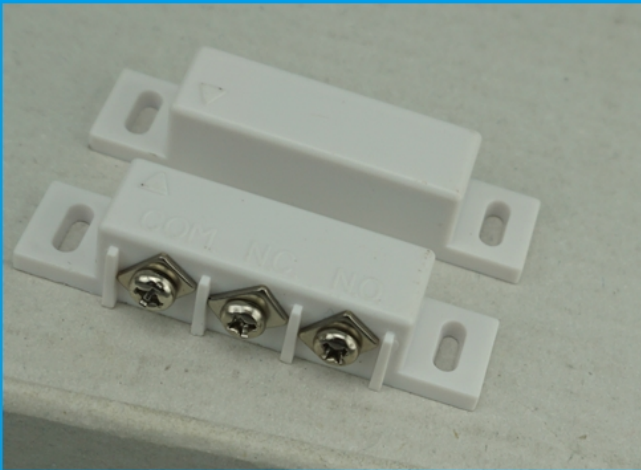
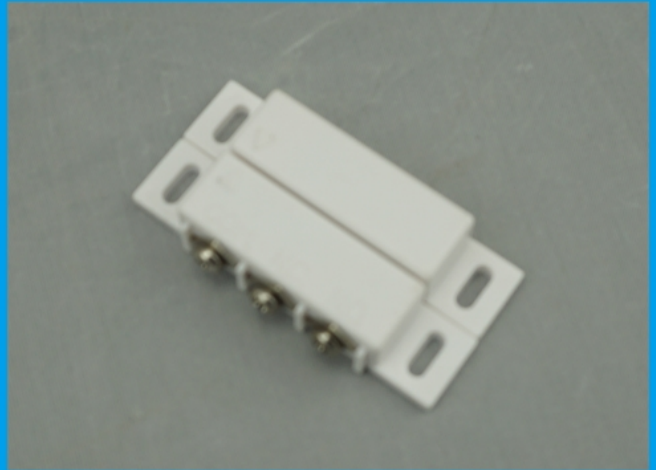
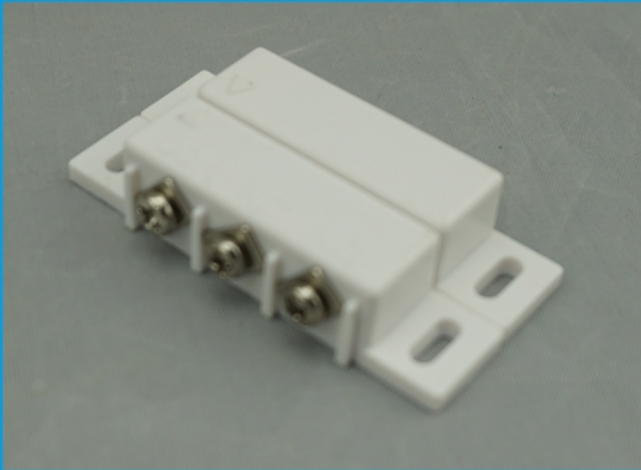
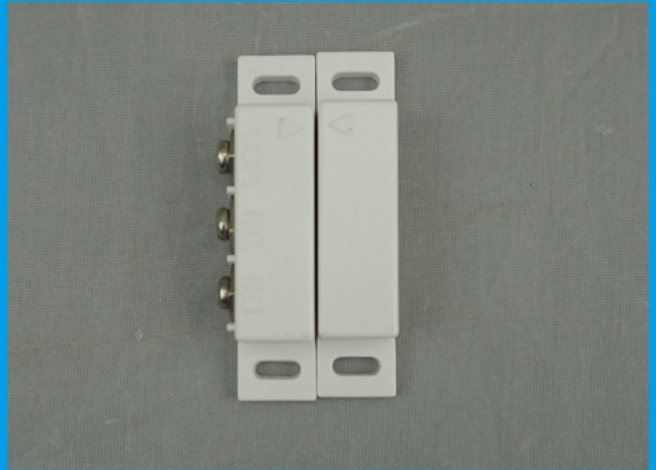
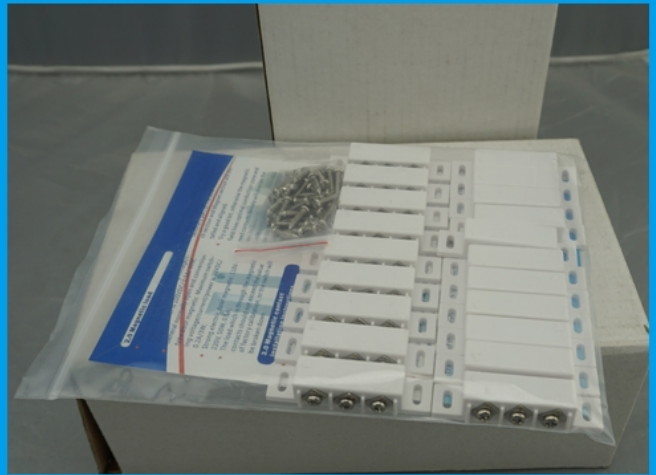
Size



Installation & working principle



O QUE SIGNIFICA EB-131B?



Como cerca de embalagem padrão do EB-131B?



Que tal outra escolha?