

NEW

PRODUCT THE ARRIVAL OF THE GOODS



SMQT

<https://eis.en.alibaba.com/>

search

THE INTERNATIONAL WEBSITE

Specification

Product name	Outdoor waterproof Wired Alarm System Intelligent PIR & MW Intrusion Detector
Model	EB-177
Size	135*58*40(mm)
Working voltage	12V DC
Working Current	Max 62MA
Detecting angle	110°
Working temperature	-20°C~50°C
Detecting speed	0.2~7m/sec
Install Height	2.4~4.8m
Storage temperature	-25°C~65°C
Sensitivity	Adjustable
PIR Feature	Infrared sensro type :Dual elements PIR sensor Auto temperature compensation:NIC compensation Detecting distance:10m Detecting angle:110°
Microwave feature	Microwave antenna type:Flat strip microwave antennea with FET oscillator Frequency:FCC&DOC10.525GHz Detecting method:Doppler(effect)move Theiries:Dopper(effect)+Energies nalysis Digital filter:50/60Hz Self-test:Microwave self-test function MCU type:8 bit microchip
Alarm indicator	Red LED Light(close if need)
Alarm output	NC,25V DC,125mA
Anti-tamper switch	NC,25V DC,125mA
Operating humidity	95%

Color	White
Weight	0.2kg

Features

1.This detector adopts the dual-micro outdoor intruding detector which includes energy-pile-up logical process,logic dynamic time split technology. It is the best choice of outdoor intruding detector for finance industry ,business and garden resident.

2.The detector's PIR part adopts sophisticate columnar FRESNEL technology, advanced radian design to improve the efficiency of energy receiving. And combine the MW and PIR technology. MW detecting area and the PIR detecting area are overlap. High sensitivity but do not have any fault alarming. The MW Part can caculate out the moving objects's speed and volume and so on.

3.Cooperatiogn with the advanced patent software technology can help make the accurate judgement between the real intruder and some other ingerference resulting in fault alarming.

Have a supper high performance of detecting and anti-fault alarming

What features of Outdoor waterproof Wired Alarm System Intelligent PIR & MW Intrusion Detector EB-177?



1.Outdoor Dual PIR+MW motion detector

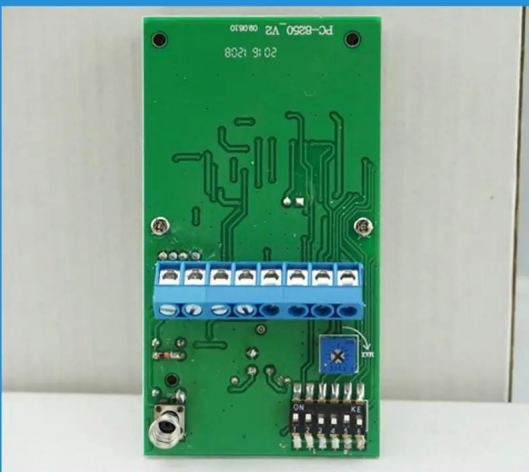
2.DC 12V Power supply

3. PIR & MW Dual detecting element

4.Waterproof, outdoor use is ok

5.2 years warranty , welcome OEM

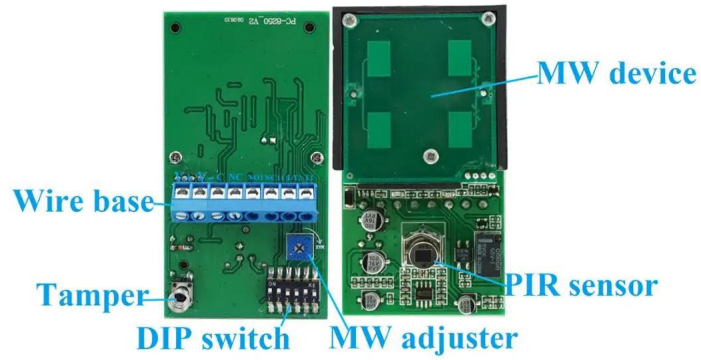
WHAT IS THE EB-177 LOOK LIKE?



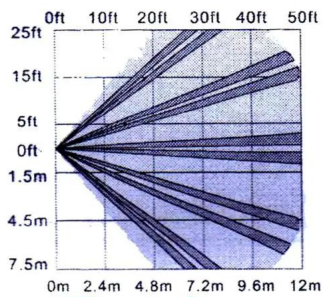
EB-177's STANDARD PACKAGE



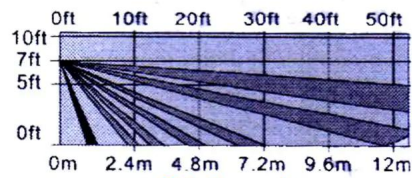
HOW TO USE EB-177?



Detection distance:

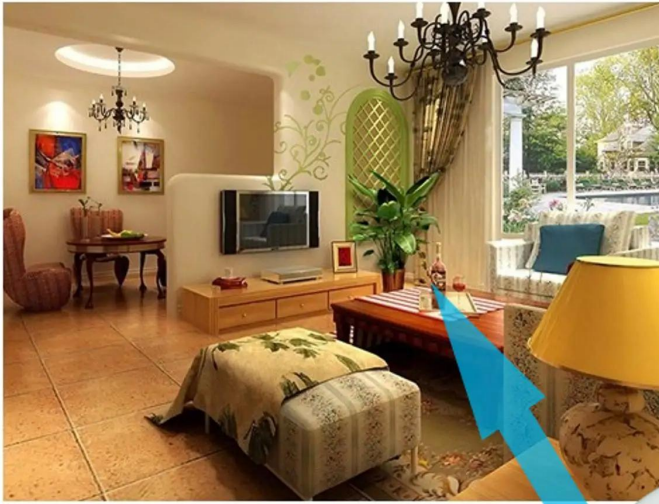


Top view



Side view





This model wired motion detector product is widely use in all kinds of burglar alarm system, Such as Villa ,Home ,Factory, Warehouse, Office, Bank etc.

HOW ABOUT OTHER CHOICE?



HOW ABOUT OUR COMPANY?



CUSTOMER



EXHIBITION

2011 Brazil Fair



2012 shen yang Fair



2013 Jinan Fair



2013 Shenzhen Fair



2012 shen yang Fair



2013 shen yang Fair



2013 Shenzhen Fair



2015 Shenzhen Fair



CERTIFICATE



HOW TO COPERATION?



PACKAGING & SHIPPING

Detection+Packing+Sealing+Finishing+International Express



Inquiry



Contract



Testing and packing



Receiving



Reply

Receive payment&Product

Delivery



FAQ

Q:Can I have a sample order?

A:Yes, we are willing to offer trial sample order to you for quality test. Mixed

samples are acceptable.

Q:What is the lead time?

A:Sample needs 1-3 working days, mass production time needs 10-15 working days.

Q:What is your MOQ?

A:No MOQ limit, the more quantity the more discounts.

Q:How do you ship the goods and how long does it take arrive?

A:The sample will be sent to you by optional shipping service (couriers, air, and sea),or appointed by buyer,7-15 days.

Q:How will we proceed the order if I have logo to print?

A:Firstly, we will prepare artwork for visual confirmation. If the color and position are right, we would make sampling firstly from silk print factory and take picture for your second confirmation before mass production.