



EB-169B'S MAIN PARAMETER

產品名稱:	SMQT LED 產品名稱 security
產品型號:	EB-169B
工作電壓:	DC 12V / 24V (可選)
工作電流:	90 mA
安裝尺寸:	可選
安裝方式:	螺絲 / 膠水 (可選) 請參閱 OEM
安裝孔距:	100 (螺絲孔距) * 75H (mm)
安裝孔徑:	2 孔
工作電壓:	12V + (可選) / GND (可選)
工作電流:	180mA
工作溫度:	可選, 請參閱 OEM
安裝位置:	可選 ABS
安裝位置:	可選 + 螺絲 / 螺絲 / 螺絲 / 螺絲 / 螺絲
安裝位置:	250 螺絲
安裝位置:	可選 2 孔
OEM:	請參閱 OEM

□□□□□□□□□□ **EB-169B** □□□□□□□□□□?



1. Wired emergency LED Strobe light for security warning use

2. Input voltage DC12V/DC24V (Optional)

3. Working current 180mA

4. Big size: 100(Diameter)*75H(mm)

5. Flash frequency 90 times per minute

6. Shell color red, blue(optional), green, yellow, white need OEM

7. Interface: +12V/GND

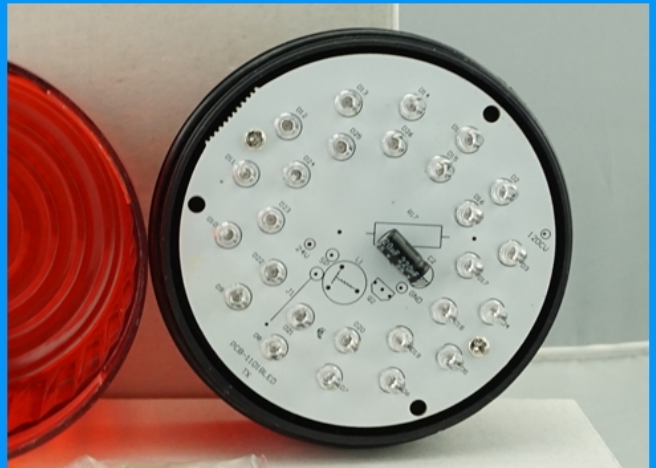
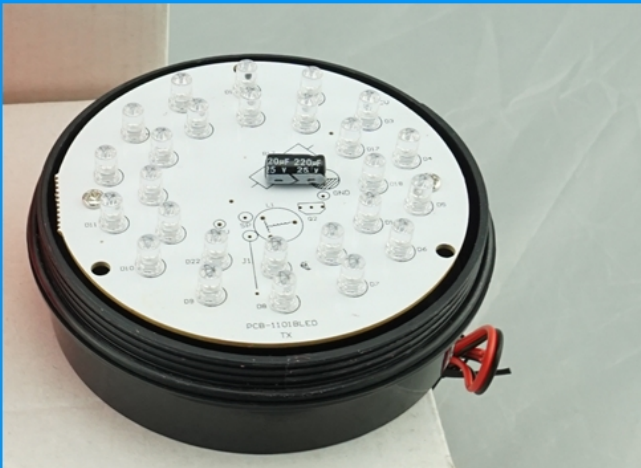
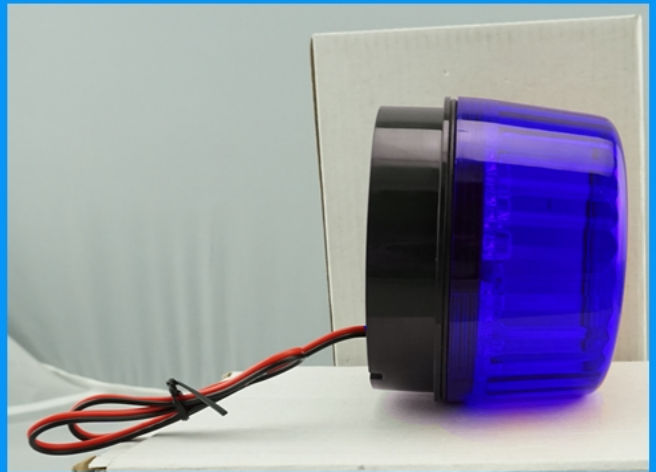
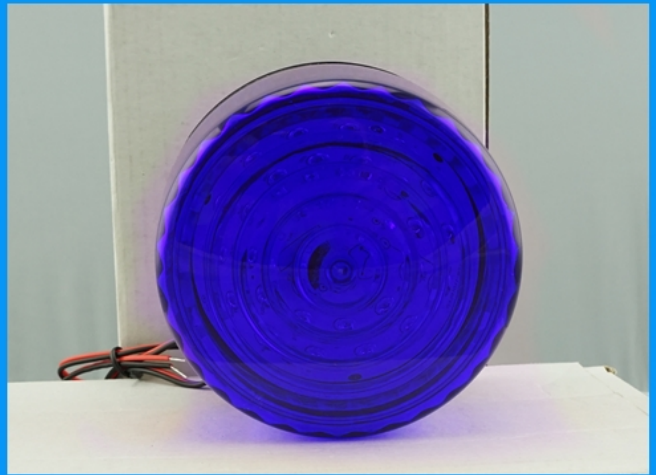
8. Suitable for all kinds of place where need strobe light warning

9. Material: PC+LED light board

10. Installation way: screw fixation, wall mounted

11. 2 years warranty, welcome OEM

EB-169B □□□□□□□□□□?





Wire length 210mm



5 types color accept OEM

Where use it?



Guard post



Shipping mall



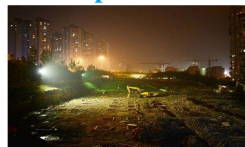
Supermarket



Tunnel



Airport



Construction site

Warning !!!



Please be careful!

It is suitable for warning flashing lights in security guard posts, gates, shopping malls, supermarkets, highways, tunnels, airports, and construction sites. can also match alarm panel to use.

□□□□□□□□□□□□□□□□

