

● Parameter

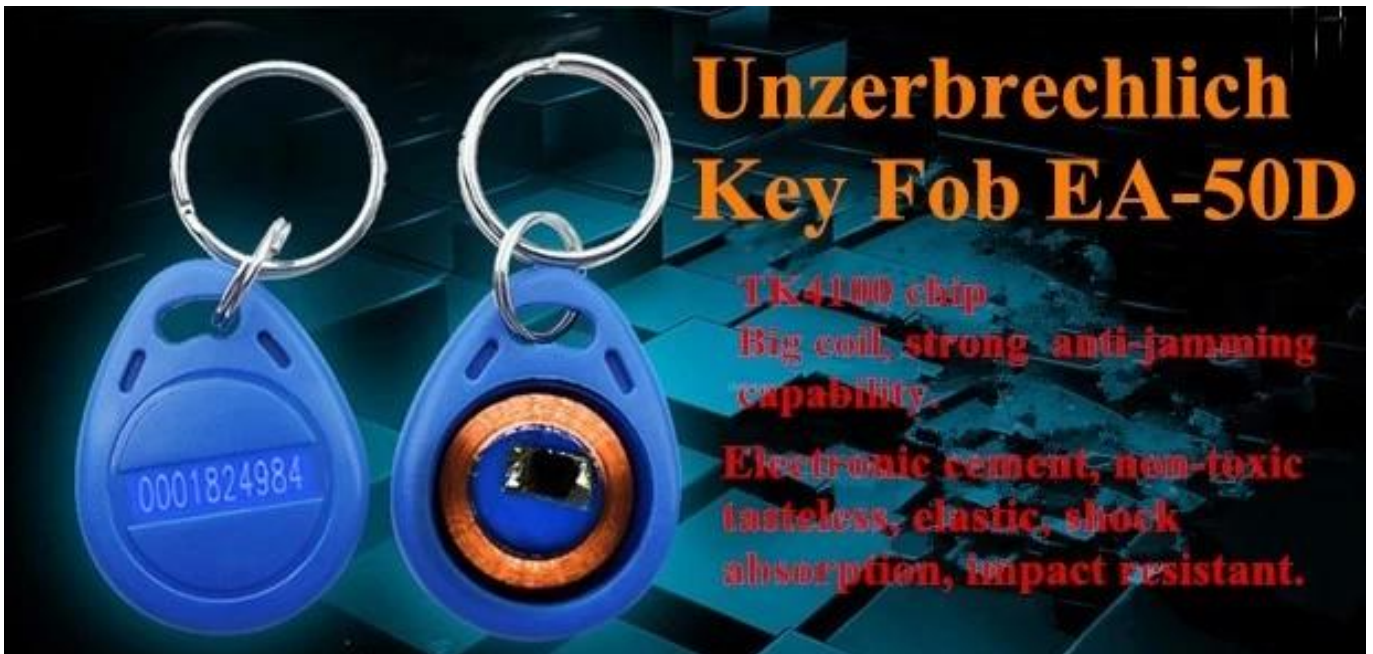


RFID Tag Size	40L * * * * * * * * 32W 20H (mm)
Chip Model	TK4100
Frequency	125KHz
Read Range	2-20cm
Material	Electronic cement
Color	Blue
Weight	0.5g

● Introduction



This is a 125KHz EM ID tag. The tag is used for access control, parking management, and other applications. It has a read range of 2-20cm and a capacity of 3.9kbps. The tag is made of electronic cement, which is non-toxic, tasteless, elastic, shock absorption, and impact resistant.



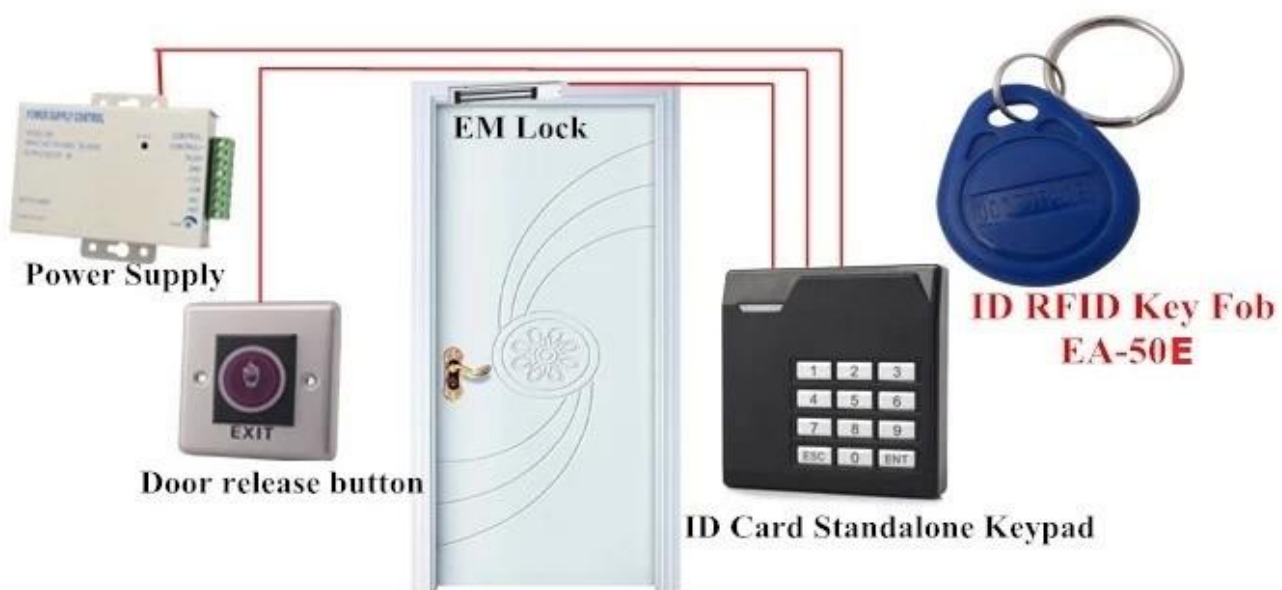
● Dimesion Picture





● Installations

SMOT®



● Features

SMOT®



WG card reader



Key tag colors



access control



standalone reader

● Packing list

SMOT



100 pcs/plastic bag



20 plastic bags/carton

□□□□□□	2000 / □□□□□□
□□□□□□□□□□□□□□□□	40L * * * * * * * * 30W 20H (□□.)
□□□□□□□□□□□□	12kg

● Office

SMQT



● Exhibitions

SMQT

2011 Brazil Fair



2012 Shenyang Fair



2013 Jinan Fair



2013 Shenzhen Fair



2012 Shenyang Fair



2013 Shenyang Fair



2013 Shenzhen Fair



2015 Shenzhen Fair

.....