

PIR



EB-183

EB-183

Φ106 \* 36 (mm)

12V DC

18mA

-10 ° C ~ + 50 ° c

Φ8m

360 °

NO / NC

2.2m - 3.6m

ABS

LED: / ( )

116



Tamper device

Pulse jumper

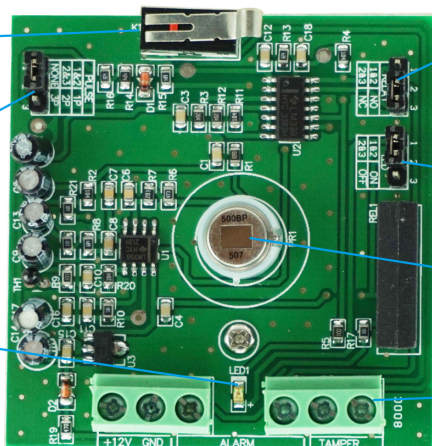
LED indicator

Output jumper

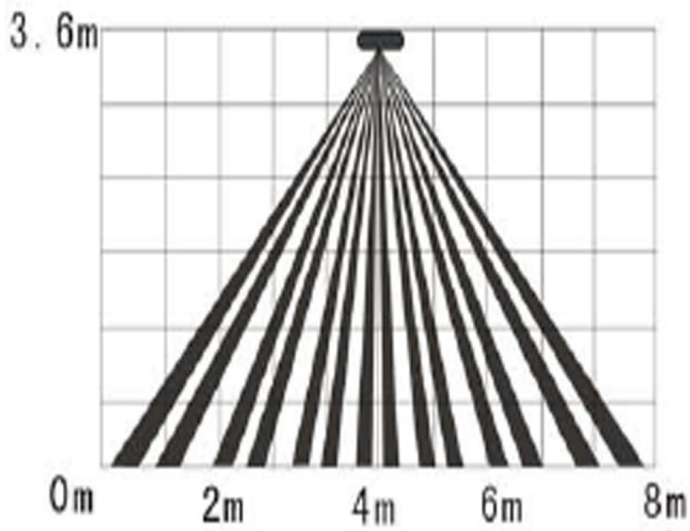
LED switch jumper

PIR Sensor

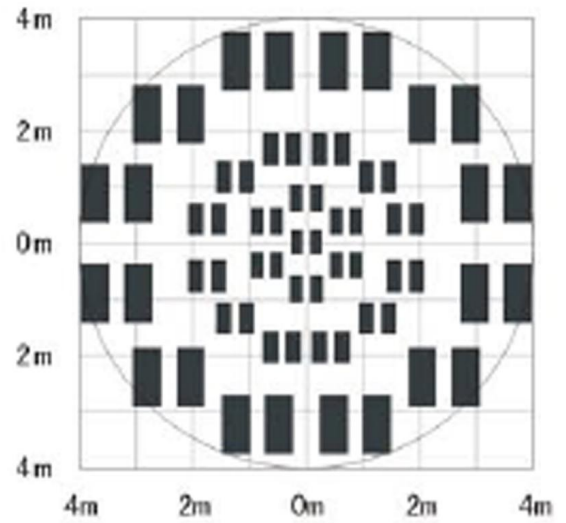
Wired port



# Detecting distance diagram:



Side view



Top view



□□□□□□□□□□ □ ?

**SMQT**  
铭汗科技



**SMQT**  
铭汗科技



**SMQT**  
铭汗科技



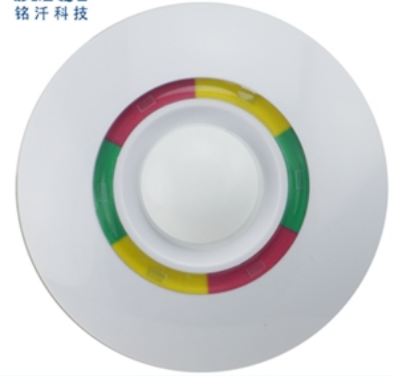
**SMQT**  
铭汗科技



**SMQT**  
铭汗科技



**SMQT**  
铭汗科技



**SMQT**  
铭汗科技



**SMQT**  
铭汗科技



**SMQT**  
铭汗科技



**SMQT**  
铭汗科技



**SMQT**  
铭汗科技



**SMQT**  
铭汗科技

