

# Wired magnetic contact sensor

*Fireproof ABS material shell*

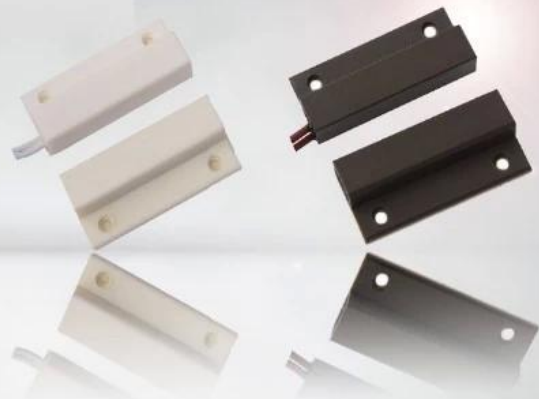
*NO/NC model optional*

*Brown/white color optoinal*

*20±5(mm) gap distance*

*Suitable wooden door or window*

*14g weight*



## Parameter

SMQT®

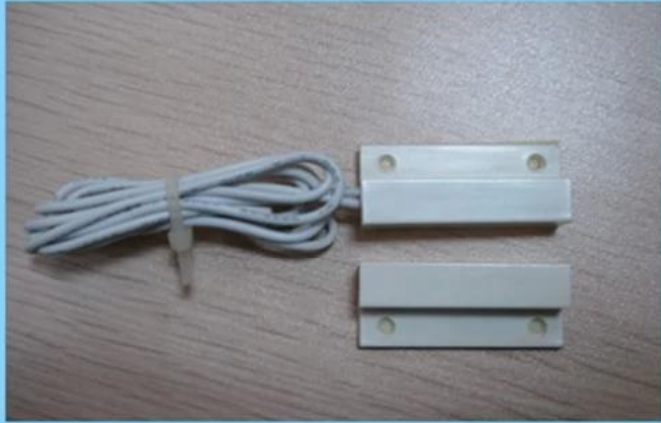
Model	41L ***** 27W 8 (mm)
Material	ABS / Fireproof
Gap distance	20 ± 5 (mm)
Rated voltage	≤100VDC
Rated current	≤500mA
Rated power	≤10W
Material	ABS
Color	White / Black
Weight	12g

## Introduction

SMQT®

Introduction text area containing multiple empty lines for content.

# PRODUCT PICTURE



## PRODUCT FEATURE



EB-132

*Dimension:34×41×6.5(mm)*

*NO/NC mode optional*

*20±5(mm) distance gap*

*MAX voltage≤100VDC,MAX current≤500mA*

*Fireproof ABS material shell*

*White/Brown color optional*

*Suitable for wooden door or window*

*14g weight*

*2 years quality warranty,welcoem OEM*



## ● Office show

SMQT®



## ● Exhibition

SMQT®

2011 Brazil Fair



2012 Shenyang Fair



2013 Jinan Fair



2013 Shenzhen Fair



2012 Shenyang Fair



2013 Shenyang Fair



2013 Shenzhen Fair



2015 Shenzhen Fair



.....