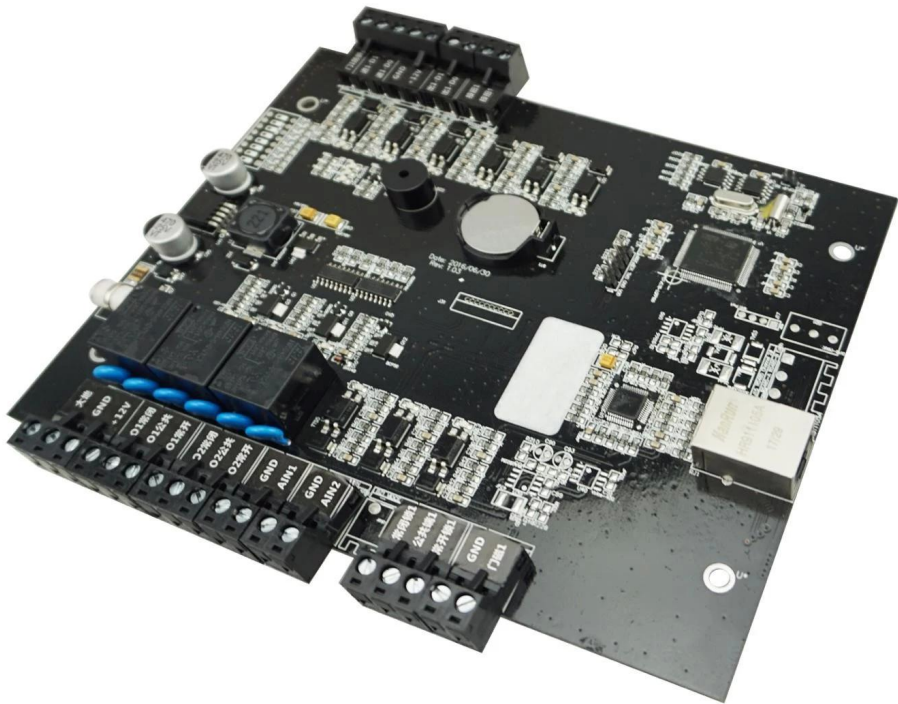
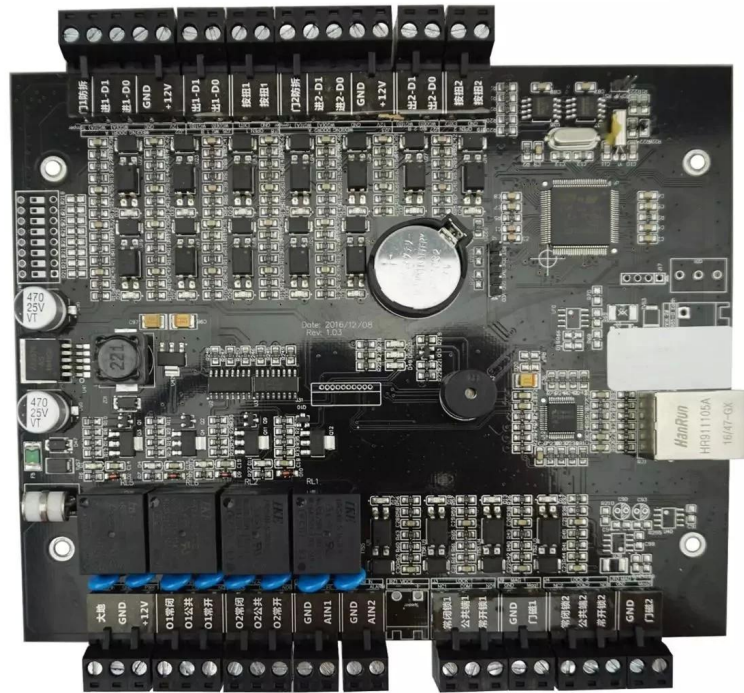


Single door access controller



□□□□□□□□□□	TCP / IP □□□□□□□□□□□□□□□□□□□□□□□□□□
□□□□□□□□□□:	DC 9V ~ 14V
Workingcurrent	& lt; 350mA
□□□□□□□□□□ 1 □□□□□□□□□□□□□□□□	
□□□□□□□□□□ 20,000 □□□□□□□□□□□□□□□□ 100,000 □□□□□□	
□□□□□□□□□□ TCP / IP (□□□□□□□□□□ R485	

Compatible accessories introduction



Card reader× 4



Lock×2



Button× 2



Door sensor×2



siren ×1



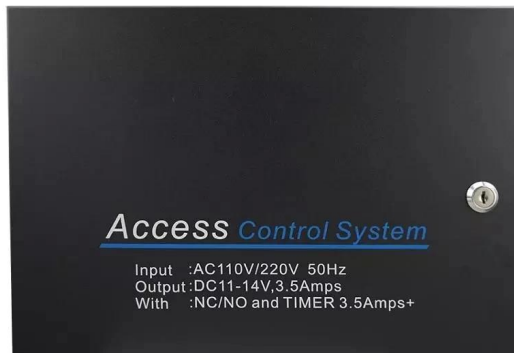
Fire alarm input/output



Burglar alarm input/ouput

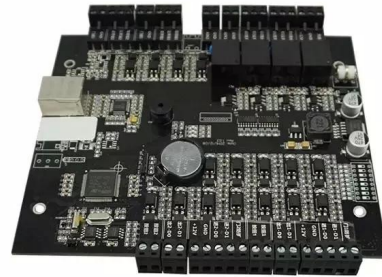


Optional accessories



Metal box power supply

Standard package



Single package size: 248*165*30mm

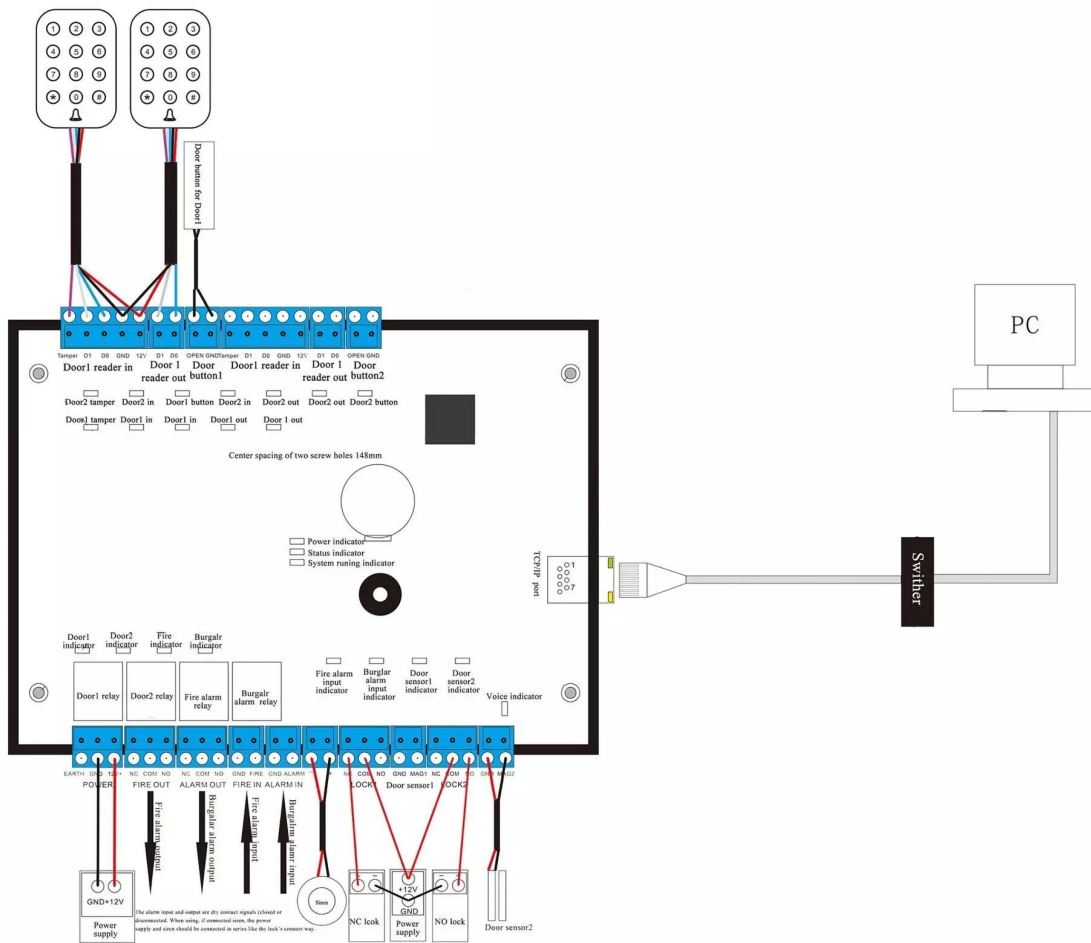
The number of full boxes: 46

FCL weight: 15kg

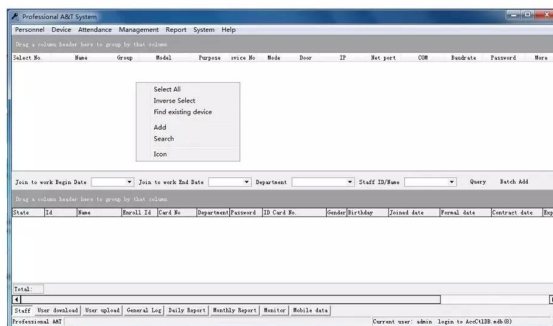
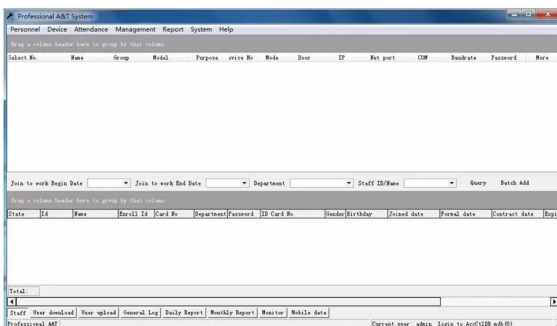
FCL size: 470*383*420mm

Welcome OEM

Wire diagram



PC software



□□□□□□□□□□ □□□□□□:

