

Wired magnetic door sensor

Fireproof ABS material housing

20±5(mm) gap

Max voltage≤100V DC,Max current≤500mA

Use for wooden door or window

White/Black color optional



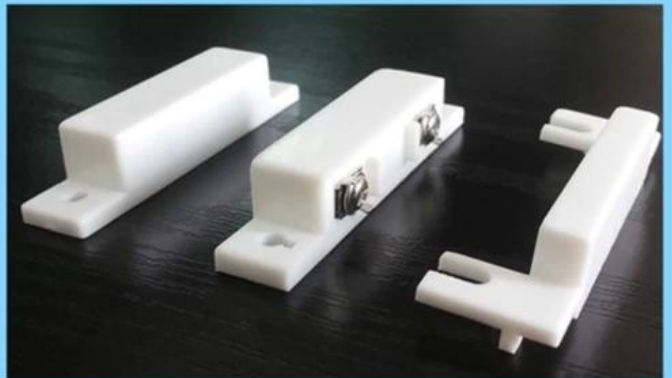
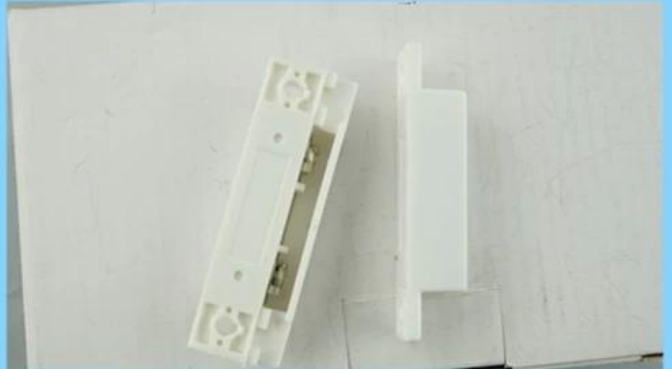
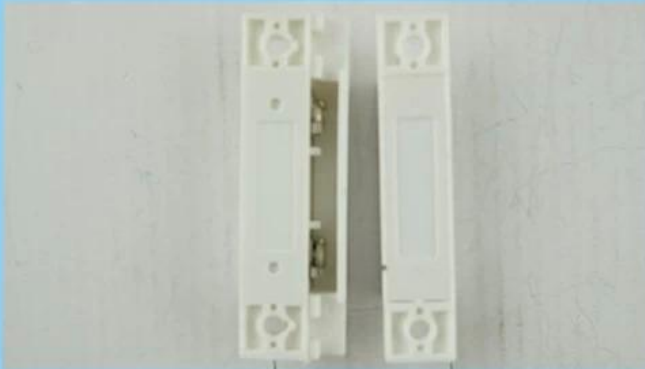
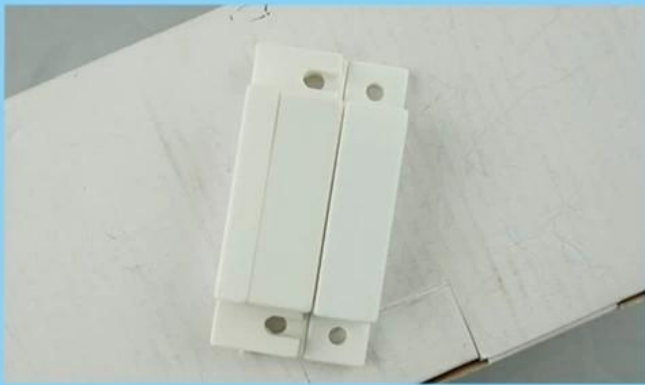
• Parameter



型號	EB-131
尺寸	64 × 19 × 13 (mm)
接線方式	NO / NC (常開/常閉)
安裝間隙	20 ± 5 (mm)
最大電壓	≤100VDC
最大電流	≤500mA
最大功率	≤10W
材料	ABS / 鐵 (ABS / 鐵)
適用環境	室內/室外
安裝位置	門框/窗框
工作溫度	-10 °C ~ 50 °C
安裝螺絲	24G

• In-kind shooting





● *Feature*

SMQT



● Office show

SMQT®



● Exhibition

SMQT®

2011 Brazil Fair



2012 Shenyang Fair



2013 Jinan Fair



2013 Shenzhen Fair



2012 Shenyang Fair



2013 Shenyang Fair



2013 Shenzhen Fair



2015 Shenzhen Fair



.....