

STROBE LIGHT

Fireproof ABS housing,DC 12V Power supply, 68/m strobe speed, color(red/blue/green/orange optional).



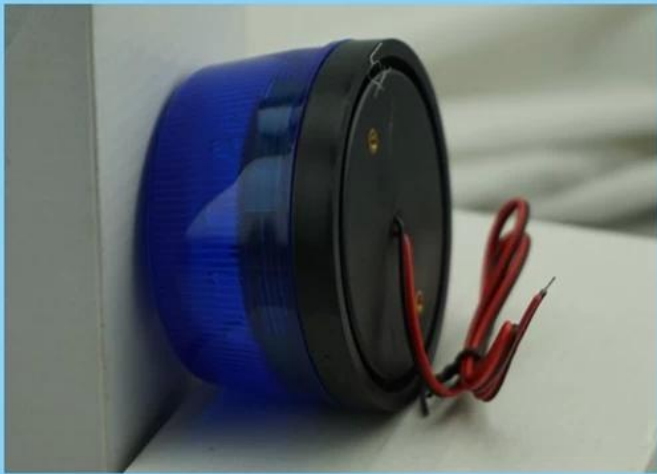
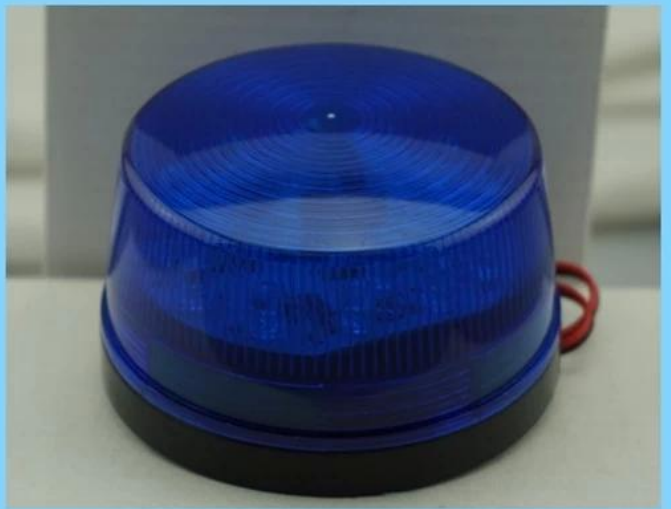
• Parameter



产品名称	闪光器
产品型号	EB-169
规格	73ø × 44 (mm)
额定电压	12V DC
额定电流	200mA
触点形式	NO / NC
闪光频率	68t / m
闪光颜色	红色 / 蓝色 / 绿色 / 黄色 (可选)
外壳材料	ABS 塑料, 防火等级 UL94V-0
重量	0.01kg

• Introduction





• *Feature*

SMQT



Strobe Alarming light

- 1.Suitable for higher-end stroboscopic system model.
- 2.Chimney texture design improves the light diffusion effect.
- 3.Flash 90 times per minute.
- 4.The high-quality LED light.
- 5.IP44 protection grade.
- 6.AS+ABS shell.

LED guide plate

Select high-quality materials, strict quality control, production of exquisite workmanship. This assures the mixer durable products.



Combination of fixed base plate

Base plate is divided into two pieces, shape material are exactly the same.

Also can use double post stent paste on the wall.

Strobe indicator light

LED lights, flash frequency up to 90 times a minute.



2011 Brazil Fair



2012 Shenyang Fair



2013 Jinan Fair



2013 Shenzhen Fair



2012 Shenyang Fair



2013 Shenyang Fair



2013 Shenzhen Fair



2015 Shenzhen Fair



.....