

Không thấm nước thẻ ID kiểm soát truy cập của đầu đọc thẻ EA-92

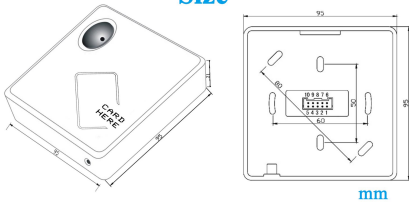


**Waterproof
ID 125Khz frequency
Accept logo print**

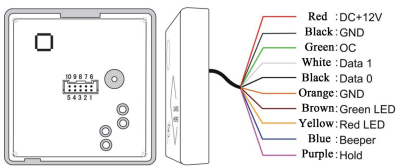


| | |
|-------------------|-----------------------|
| Model NO. | EA-92 |
| Power supply | DC 9-15V |
| Power consumption | <1W |
| Card type | 125 Khz |
| Read range | 5-10 cm |
| Cable distance | 150m |
| Output Format | WG26/WG34(Optional) |
| Keypad output | 4bits/8bits(Optional) |
| LED Tips | Flash card / Doorbell |
| Reading tips | Beeper/LED |
| Waterproof | Yes |
| Dimensions | 95L×95W×21H(mm) |
| Weight(g) | 160±10 |
| Material | PC+ABS |
| Environment | -30℃to+65℃ |

Size

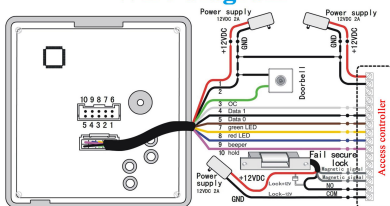


Wire port introduction



| NO | Color | Function | Description |
|----|--------|------------|--|
| 1 | Red | 12V+ | DC Power 12V |
| 2 | Black | GND | DC Power 0V |
| 3 | Green | OC OUT** | OC Out to output doorbell signal or anti-tamper signal |
| 4 | White | DATA1 | Wiegand DATA1 Output |
| 5 | Black | DATA0 | Wiegand DATA0 Output |
| 6 | Orange | GND | Signal Grounding |
| 7 | Brown | Green LED* | Grounding to display 1" message and green LED lights up |
| 8 | Yellow | Red LED* | Grounding to display 2" message and red LED lights up |
| 9 | Blue | Beeper | Beeper controller, grounding to work |
| 10 | Purple | Hold | Card reading controller, grounding to stop therefore reading |

Wire diagram



2 years warranty

